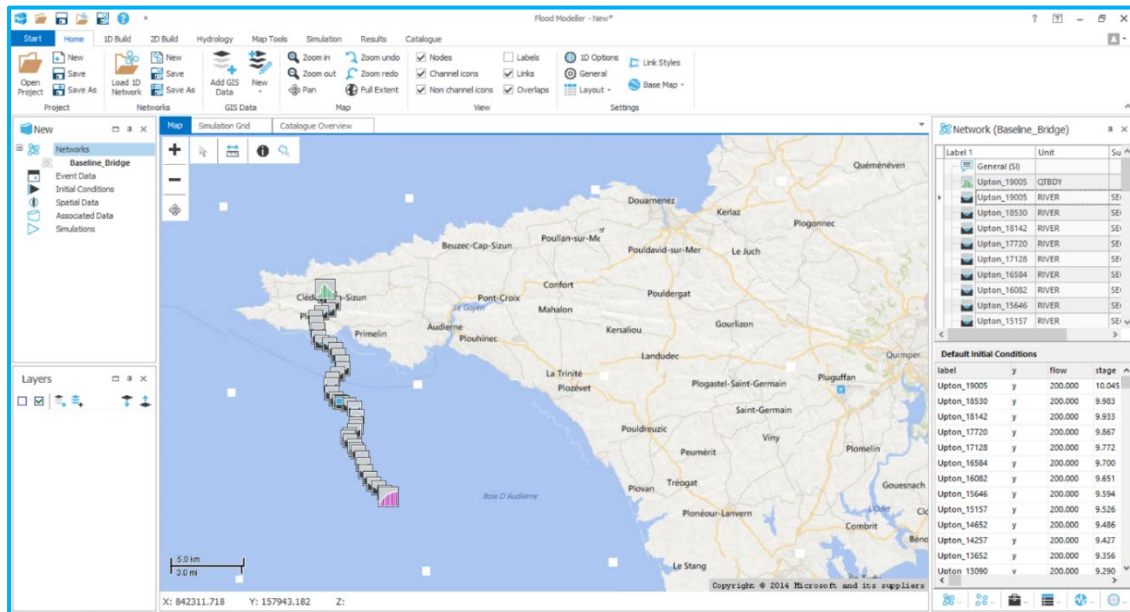


Why isn't Bing Maps displaying correctly?

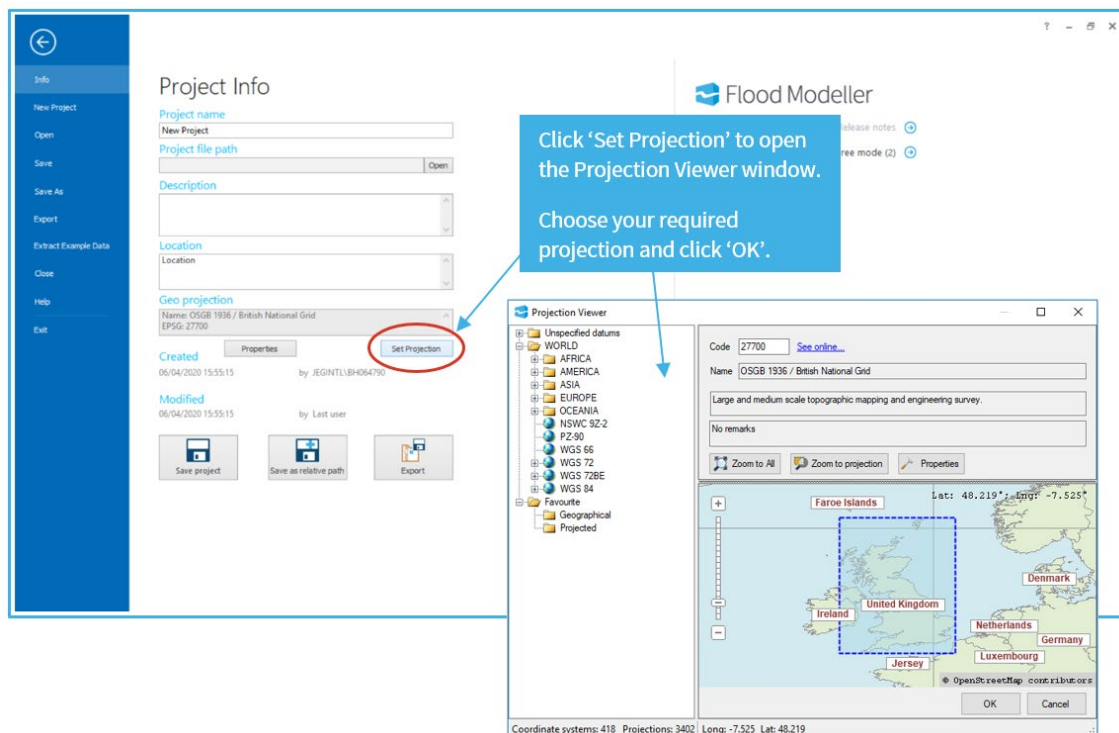
If you have tried to add a Bing Maps to your model (from the 'Home' tab, clicking 'Base Map' and selecting 'Bing Maps' from the drop-down), you may find that the map view within Flood Modeller displays mapping for a different part of the world, or potentially no mapping at all.

This month's tip of the month has been submitted by Beccy Haunton, Support Manager for Flood Modeller, and introduces two common but easy to resolve issues that can occur when using Bing basemaps.

Problem 1: You have added a Bing basemap successfully, but it is showing a different part of the world.

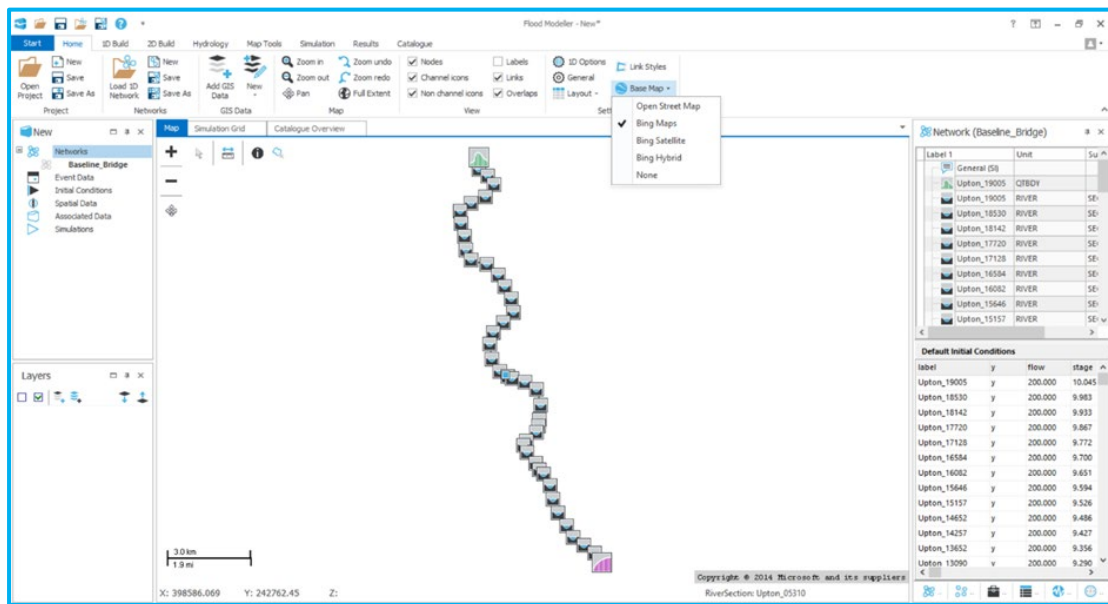


What to do to solve this: Click 'Start' (top left-hand corner of screen) and from the 'Info' tab, click 'Set Projection'. Choose the projection you require and click 'OK'.



Tip of the month – April 2020

Problem 2: You have tried to add a Bing basemap, but the map view shows nothing at all.

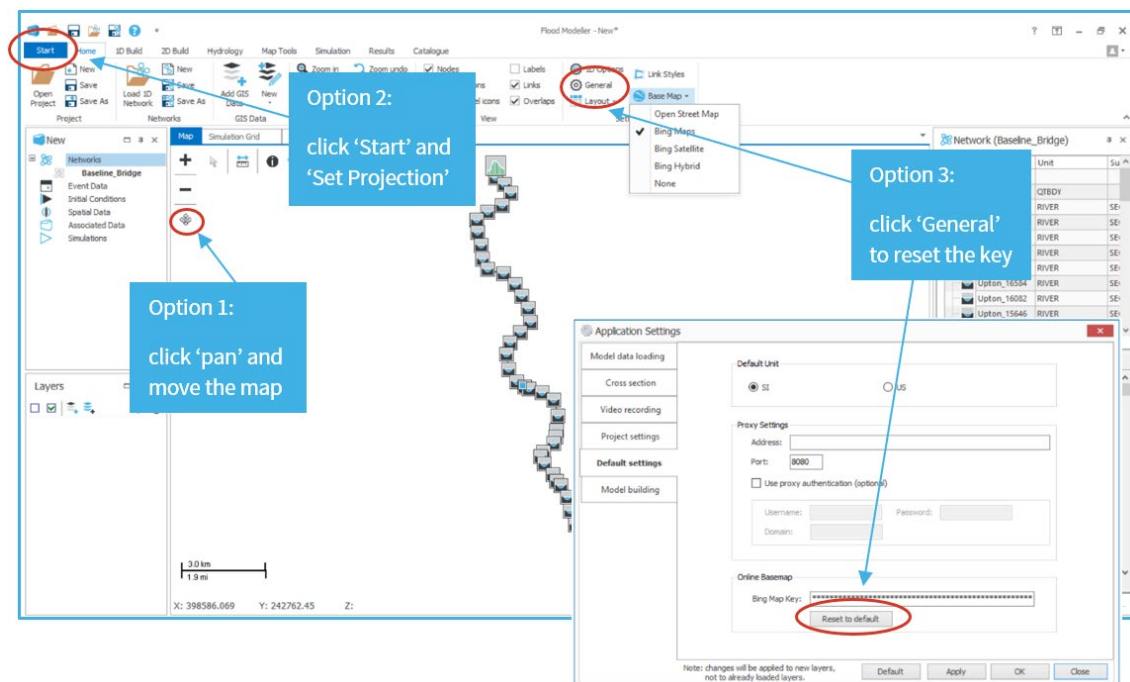


What to do to solve this:

Option 1: Click the 'pan' button and try moving the map around a little. Sometimes the basemapping will appear after doing this.

Option 2: Reset the projection (as detailed in Problem 1)

Option 3: Click the 'General' button on the home tab to open the 'Application Settings' window. In the 'Default Settings' tab, click 'Reset to default' just under where the Bing Map key is shown. Ensure you 'Apply' and save these changes. Close Flood Modeller completely and reopen the software for this to take effect.



Results:

